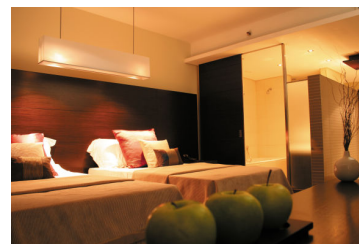
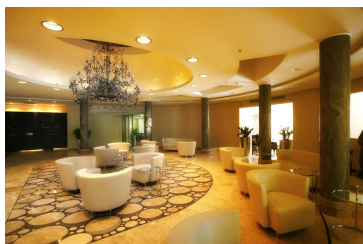




Fact Sheet

Property Profile

An urban five star deluxe boutique hotel, offering the unique experience of genuine hospitality. The 150 bedrooms and themed suites, designed to cosset you in luxury, the Spa and leisure centre, the state-of-the-art meeting rooms and the chic and exclusive restaurants, all combine to offer the ultimate hotel experience. Within walking distance of the vibrant local shopping areas, the busy seafront, the trendy restaurants, bars and cafes of Sliema, Malta's foremost address. The hotel also offers a unique art gallery featuring contemporary art & sculpture collection. The Palace is like no other. It redefines service and quality.



An easy walk to the vibrant local shopping areas, the busy seaside, and the restaurants and bars of Spinola Bay, you will find that your new residence maintains the dignified air of somewhere that values its tranquility.

Nestled amongst the tight warren of distinguished Maltese town houses and trendy urban villas that make up central Sliema, The Palace sits regal and yet accessible to the cosmopolitan cafés and leading business premises that make this Malta's foremost address.

Hotel Rooms

The Palace is like no other. It sets new standards in service and quality. More than just a bed to sleep in, our classic lines, combined with elegant furnishings, and eleven different types of rooms and themed suites designed to cosset you in luxury, all combine to offer the ultimate hotel experience.

In addition we offer a full range of in-room services. Whether you are looking to enjoy a sumptuous meal, or to have a personal hairdresser, we can offer you our full range of services, deliverable directly to your room. For those of you looking for something even more exceptional, we can also provide you with the exclusive services of a butler, who will attend to all your needs, with the utmost in personal attention.

Amenities & Services

- Plasma Screen TV with satellite reception
- Pay TV & Information Channel
- Bathrobes & Slippers
- Mini-bar
- Turndown Service
- Safe with charging socket for laptop
- 24-hour Room Service
- 2 Luggage Racks
- Infrared Computer Keypad (on request)
- Tea & Coffee Making Facilities
- Hair Dryer
- Furnished balconies / terraces
- Telephones with voice mail
- Signature Bath Amenities
- Cots (on request)
- Full Length Mirror
- Choice of pillows
- Individual Climate Control
- In-room wireless broadband internet access (Wi-Fi) – at a charge
- Queen Mattresses in Double Rooms
- Zipper-link mattresses in Twin Rooms
- Separate Bath & Shower Stall
- Smoke Detectors in rooms

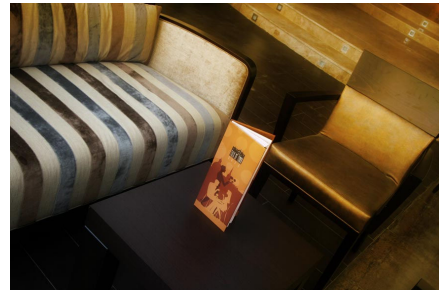
- Sprinkler System in rooms
- Make-up/Shaving Mirror
- Shoe polish machines in public areas

Restaurants, Bars and Lounges

Gossip has always been the lifeblood of any court or palace and with our “news” themed restaurants The Palace is no exception. Take a moment to catch up with the news, chat with friends or reflect on the days events at one of our three choices of chic and exclusive restaurants:

The **Talk of Town Café**, situated next to the beautifully restored 18th century buildings, is the place to be seen in the heart of Sliema, combining fashionable dining, exquisite food and an array of fine wines to create a vibrant and distinctive ambiance.

The **Tabloid** is a versatile venue offering contemporary Mediterranean cuisine in a stylish and modern setting. Here you can enjoy breakfast, lunch or dinner, selecting from our well-chosen buffet or à la carte menus.



The **TemptAsian** Lounge Bar, situated on the 8th floor with truly magnificent views of Sliema and the Grand Harbour, offers a fusion of Asian and Western cuisines in a tropical and relaxing Asian themed setting.

The Executive Lounge

Conveniently located on the 1st floor close to the fully fledged business centre where full secretarial services are available. The lounge offers clients staying in any of our suites, the perfect meeting area for one-to-one meetings. One can avail to continental breakfast, non-alcoholic drinks and snacks during the day, afternoon tea and pre-dinner drinks. This lounge offers natural daylight and overlooks the hotel courtyard, hence being the ideal venue to offer clients that extra special personalised attention.

Private and exclusive functions can be catered for also at any of the hotels terraces and function rooms.

Hotel Conferences

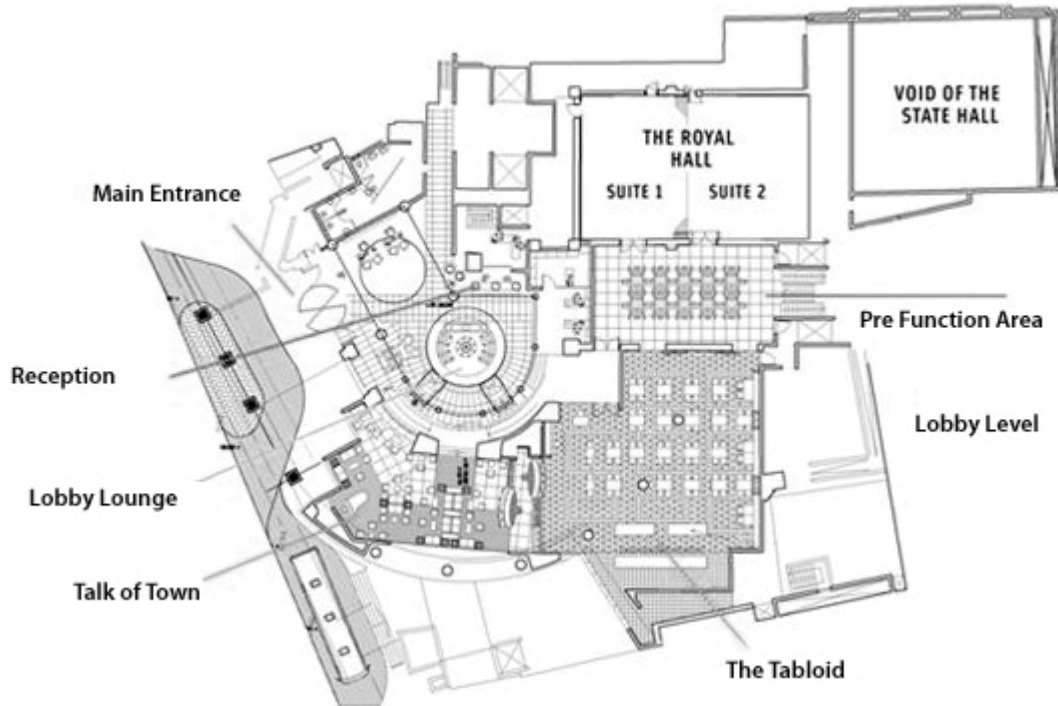
We understand that you can't bring your office with you when you travel which is why our full business infrastructure is here to support you. Do you need presentation material, overhead projectors, flat screen TVs? Our business centre has it all and more. Maybe you have important corporate clients to impress with an exclusive meal or a conference arranged at short notice? Just leave it to us whilst you work on the presentation. What about arranging meetings with key members of the local business community? Our highly qualified concierge is at your exclusive disposal.

The following facilities and equipment is available:

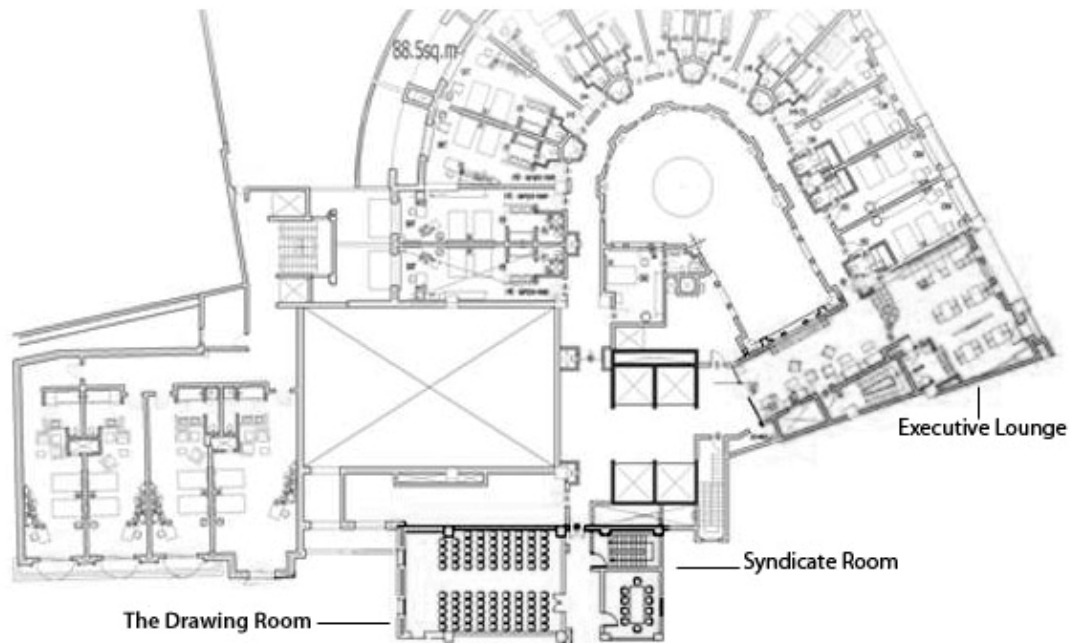
- Natural daylight & black-out curtains
- Business Centres
- Double glazed doors
- Car parking
- Secretarial Services
- Fax transmission & coloured photocopying services
- Business phone services
- Express mail
- Video messaging
- Stand alone PA system
- Overhead projector
- Data projector
- Slides projector
- VCR, Plasma
- TV' and DVD equipment
- Projection screens
- Flip-charts
- Fixed, Lapel & Roving microphones
- Podium
- Simultaneous translation booths
- Wi-Fi internet
- 2 Pre-function areas
- Designated Smoking Area adjacent to conference hall
- Outdoor terraces for coffee-breaks and networking lunches
- Historical exclusive venue adjacent to conference centre
- Themed Projection
- Hospitality desk
- Technician on call



Floor plan A:



Floor Plan B:



Conference & Events Chart:

	The Royal Hall	The State Hall	William Morris Suite	The Drawing Room
Location	Level 0	Level -1	Level 0	Level 1
Dimensions (m.)	17 x 10.8 x 5	13.5 x 14 x 5	22 x 6 x 5	10.6 x 7 x 2.5
Pre-function Area (sq.m)	123sq.m.	65sq.m.	63.12	--
Banquet	200	220	70	85
Rounds	180	250	40	60
Cabaret	108	150	24	36
Theatre	240	240	105	70
Classroom	144	84	65	50
Boardroom	72	64	40	40
U-Shape	58	48	39	34
Hollow Square	72	64	42	42
Reception	200	200	200 indoors 150 outdoors	75
	Syndicate Room 1	Syndicate Room 2	Syndicate Room 3	Victoria Suite
Location	Level 1	Level 1	Level -1	Level 0
Dimensions (m.)	11.5 x 3.6 x 2.5	4.5 x 3.7 x 2.5	7.8 x 6.1 x 2.5	5 x 5 x 5
Pre-function Area (sq.m)	--	--	65sq.m.	65sq.m.
Banquet	--	--	60	--
Rounds	--	--	30	--
Cabaret	--	--	18	--
Theatre	30	--	40	--
Classroom	18	--	18	--
Boardroom	22	10	30	10
U-Shape	--	--	24	--
Hollow Square	--	--	30	--
Reception	40	--	40	--