

Fact Sheet

Property Profile

The Riviera Resort & Spa is situated in one of the most picturesque and charming areas in the north of Malta, just across the channel from the Islands of Gozo and Comino. The Resort enjoys a quiet and relaxing location, immersed in pristine countryside and boasting un-spoilt shoreline and sea.

A public bus service connects the Resort to all major towns. Mellieha Bay, the Island's largest sandy beach, and Gozo Ferry terminal are 1km away and boats to Blue Lagoon depart from the pier in front of the Resort in Summer.

The comfortable 250 rooms are luxuriously furnished and enjoy either open sea or country views.

The Resort is also an excellent venue for business, with 7 fully equipped conference rooms spread over an area of over 860m². La Bodega Wine Bar is exclusively used for private groups.



For relaxation and pampering, the Elysium Spa, complete with indoor pool, Jacuzzi, fitness room, squash court, sauna, and other hydrotherapy facilities, offers individual treatments and special Spa packages. Sport and leisure facilities include two pools, children's pool, diving centre and water sports in summer. The Resort's picturesque sandy

Hola Beach is located 100m away and offers beach facilities and bar service in peak season.

Hotel Rooms

Most of the 250 lavishly furnished guest rooms, including a number of superior rooms and suites, enjoy an enchanting view of the Mediterranean Sea and the islands of Comino and Gozo. Others enjoy views of the tranquil Maltese countryside or views of the bay. All rooms have air-conditioning and central heating, satellite TV, direct dial telephone, mini bar, safety deposit box, data port connection and ensuite bathroom complete with hairdryer.



A choice of room types is available to suit our guests' special requirements, whether traveling on leisure or business. Non-smoking rooms, rooms for the physically challenged and family/interconnecting rooms are also available.

Dining Overview

The Riviera Resort & Spa's stylish lounges, bars and restaurants, and open-air terraces, offer ample opportunity to savour our Mediterranean Cuisine and the romantic seaside atmosphere. All the outlets are elegantly furnished each with an individual original finishing and enjoy magnificent sea views with the Islands of Comino and Gozo as a backdrop.



The Mirasol Restaurant

Serving lavish buffet meals, the Mirasol Restaurant's elegant yet comfortable setting is ideal for a pleasant dinner or an idyllic Sunday lunch (November to May) with family or friends. The surrounding tranquility of the area and open sea views are combined with the fine choice of cuisine and abundant feast of colourful dishes to satisfy your appetite.



The Sol e Mar Bistro

Sol e Mar Bistro is an all-day-dining bistro, offering a variety of impressive dishes using simple Mediterranean flavours and emphasis on fresh ingredients. The Chef's daily specials include fresh fish and mouthwatering pasta dishes. Outside dining on the seaside terrace is a unique experience in the summer months. Bookings are highly recommended.



The Charley Noble Cocktail Bar

Decorated in a warm maritime style with polished wooden paneling, The Charley Noble has a welcoming pub ambience suitable for a night out of fun. The outdoor terrace is open in Summer with regular evening entertainment.



The Lobby Bar

With a prime location in the Resort's lobby and enjoying open views of Comino and Gozo, the Lobby Bar is open all day serving a selection of beverages, coffees and cocktails.



La Bodega

This traditional vaulted wine cellar with an intimate ambience is ideal, private events and group entertainment.



Pizzissima

Overlooking Marfa Bay, the Pizzissima is a casual diner with a relaxed and comfortable design and furnishings serving Pizza, Pasta and Salads. Open daily in the summer months and during the weekends in the Winter season.

The Lookout Bar

This pool bar is situated on the elevated pool deck overlooking the picturesque the Bay. It offers day time bar service in the summer months for Resort guests. It is also open for non-residents for lunch daily in the summer months.

Conference and Events Facilities

Planning and organizing a successful event requires a great deal of attention to detail. The Riviera Resort & Spa offers the right combination of location, expertise, flexibility and quality. Here you will discover a unique facility that mixes business with pleasure like no other Resort.

Meeting Room Capacities

Equipped with the latest technology, our conference facilities, most of which enjoy natural light can be set up in any combination and are available for any occasion. Please refer to the Floor plans for further information and dimensions.

Business Facilities

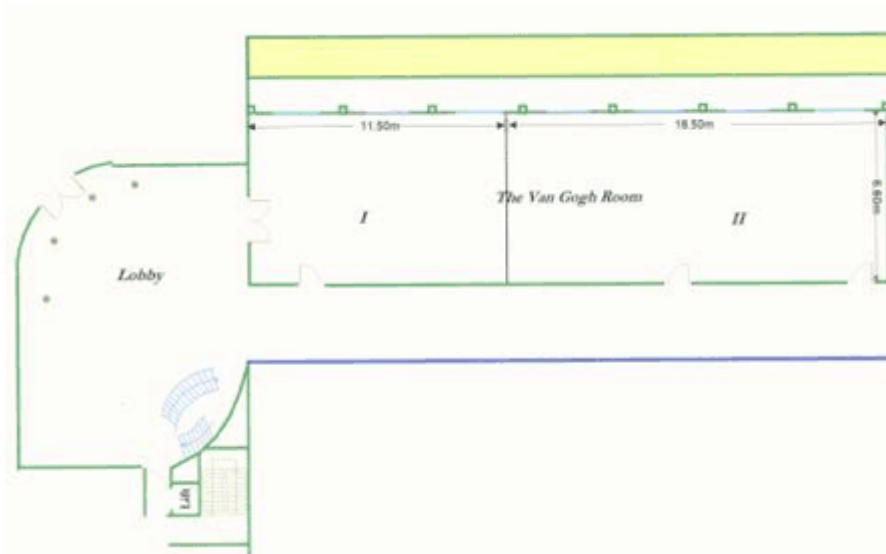
The Riviera Resort & Spa dedicates all resources to offer the highest quality of professional services and facilities to ensure successful events. Our professional team handles all the elaborate preparations. Any additional equipment required can be provided upon request. Data ports in each guestroom enable the use of laptops, while the 'out of office' delegate can make use of the Resort's Business Office.

Special Events

The Riviera Resort & Spa's professional team can coordinate specialized events combined with Conference or Incentive Groups. This may be any sort of set up, be it a small cocktail party or a formal gala dinner, an incentive program or a uniquely themed event to make your experience memorable and unique. These may either be held in the Resort's elegant restaurant and banqueting halls, or one may opt for outdoor theme nights under the starlit Mediterranean skies on the pool deck or at Hola Beach.

Conference Centre Floor Plans and Capacity Chart

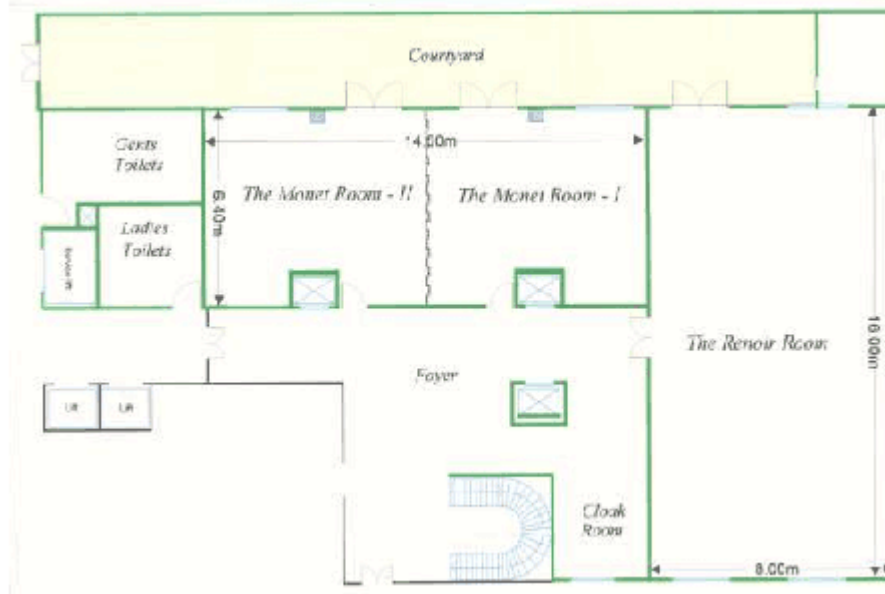
The Van Gogh



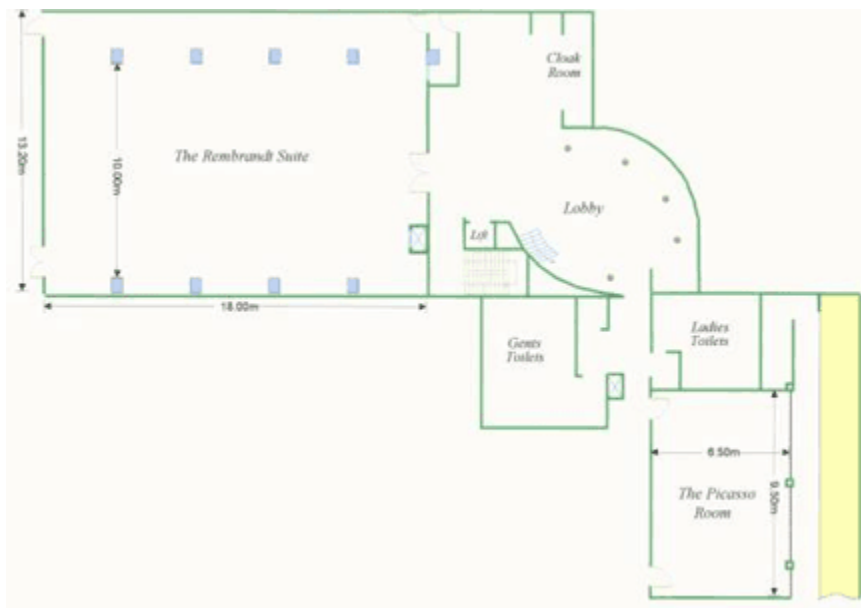
The Cezanne



The Monet and Renoir



The Rembrandt Suite and the Picasso



Conference Centre Capacity Chart:

Room	Area (m ²)	Theatre	Class	Reception	Banquet
The Rembrandt	180	240	120	240	160
The Renoir	128	120	90	170	80
The Monet I	48	48	24	60	40
The Monet II	45	48	24	60	40
The Monet I+II	92	80	60	120	80
The Van Gogh I	76	100	60	100	65
The Van Gogh II	122	150	100	160	100
The Van Gogh I+II	198	250	160	300	165
The Picasso	67	70	45	85	60
The Cezanne	200	140	100	300	240